

### RS-SQL 3.06 — Focused on RS-SQL & RSWeb®.NET Enhancements

This data sheet is not intended to replace the RS-SQL 3.06 Official Release Notes, but rather to identify some of the more significant changes to the software. It is critical that you thoroughly read the RS-SQL 3.06 Release Notes for a full list of new features and for important information relevant to your upgrade.

### RS-SQL Interface Highlights

#### Per Your Requests, Imaging on Demand Functionality Added

Based on feedback from our last Strategic Partner Conference, imaging on demand has been fully integrated into RS-SQL. Imaging documents on demand provides a way for the record center to create images of documents requested by customers. Rather than physically delivering a document to the customer, it can be retrieved, scanned and made available for viewing through RSWeb.NET. Images can also be emailed to the client or, using RSWeb.NET, they can view, print or download the image for adding to their own image archive.

RSWeb.NET users can now add and edit documents, as well as request images be created from documents, all from their desktop.

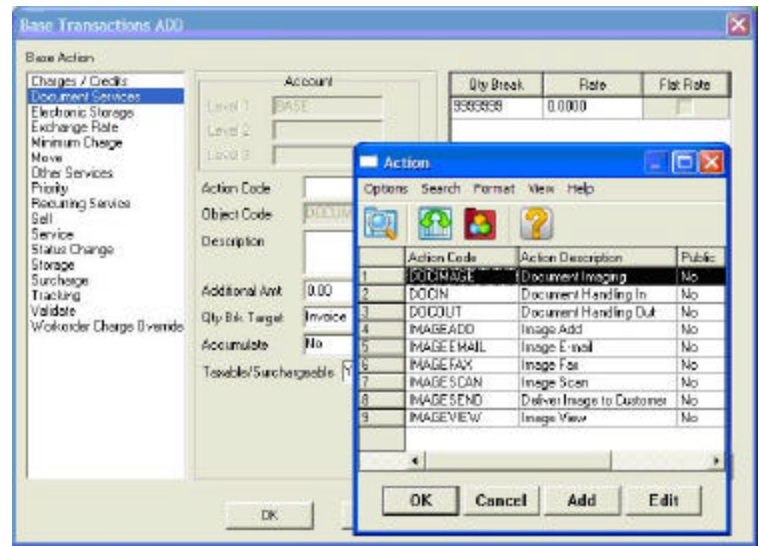
To support document imaging, new activity sets and actions have been set up to fully automate the billing. A new imaging work order has been created, and invoicing has been updated to include a section for document imaging charges.

#### Cubic Foot Billing Now Supported For Storage and Services Offering Greater Flexibility

To be known as unit volume billing, so as to encompass metric or imperial measurements, this feature allows you to set up transactions to bill for all accumulated cubic volume across many item subtypes.

In the Transactions Add/Edit dialog, if the base action is Storage, Service, Move, Priority, or Validate, there is a new Unit Volume check box. When set to Yes, the quantity breaks specified in this transaction refer to each cubic volume that the item occupies, rather than to each item.

This new feature allows the flexibility to mix cubic volume charges with standard per object charges. For example, if you want to charge Storage, Pickup and Delivery of Containers as cubic volume but charge handling of containers based on their Object Code, that is fully supported.



#### Apply a Priority Service to Each Action of a Work Order - Capture More Revenue!

In the past, a priority service could only be applied to an entire work order, or to each item in the work order. A new option has been added that enables you to apply a priority service to each action of the activity sets in the work order. This is accomplished by allowing you to associate an action priority with an action.

For example, if a priority service is selected on a work order, a corresponding priority action can be automatically applied to each individual action, such as the PULL. This allows you to charge for priority surcharges on every service provided.

#### Model Users Added to Simplify Your User Management

The Model User feature is designed to allow you to create a model user that other users can then reference for the following attributes.

- account access
- standard function access
- web function access
- web forms
- web column format groups
- web sort format groups
- web query groups

This works similar to the previous method of cloning users; however, when changes are made to the model user, they are automatically made to all users that reference the model user. Model users can be created and used in both RS-SQL and RSWeb.NET.

## For Simplicity, the Global Edit Close Date has been Enhanced for Work Orders

In the automatic Workorder Close Date feature, added in RS-SQL Version 3.05 within the Work Order grid, the Close Date and Close Time fields have been removed from the Global Edit dialog and a new menu option, Global Edit Close Date, has been added.

If your system setting (WorkorderAutoCloseDate) is set to Yes, the Close Date and Time fields are grayed out and you can only edit to the current date and time. An additional field, allowing closed work orders to be globally opened, is available if your system setting (WorkorderLockWhenClosed) is set to Yes, and the user has the privilege to unlock work orders.

## Two New Queries Added to Help With Invoice Reprinting by Invoice Cycle Code

Two new predefined queries have been added to the Invoice Reprint grid in Administration.

One loads all invoices for a specified invoice cycle code and a specified invoice print date range, while the other loads all invoices for a specified invoice cycle code and a specified invoice begin and end date. Both can be activated by pressing F6 from the Invoice Reprint grid.

## Translate On Demand Now More Accessible

Want to translate a word or an entire screen to make it more meaningful to your business? In this version of RS-SQL, the F12 key is now always enabled with access to the Translate on Demand feature, being controlled through function access.

When function access is set to No, you can still press F12 and see the Translate on Demand interface, but cannot edit the text.

## RSWeb.NET Interface Highlights

### Invert Your Selections With A Few Simple Clicks

A new menu option has been added to the Results menu in all RSWeb.NET grids: Invert Selection. After selecting several items in a grid, you may decide to make a change to all the other unselected items. In this case, you can invert the selected items. This causes all selected items to become unselected, and all unselected items to become selected.

### Multiple Work Order Addresses At Your Fingertips

When checking out items from the cart to a web order or work order, you can now choose from a list of delivery addresses. An address grid is displayed with all available addresses for the account. Click a row to select that address, and the address fields are automatically populated.

## Your Client Now Has Greater Control When Adding Their RSWeb.NET Users

Changes have been made to the User Add/Edit dialog in RSWeb.NET, allowing your clients to control even more aspects of their users access to your RSWeb.NET. The areas they can control themselves include:

- User Code, Name & Password
- User Default Language
- User Status: Active or Inactive.
- The Model User to Reference
- Account & Function Access Lists
- Web Forms, Column Formats, Sort & Query Groups

They can also view the following for each of their users:

- Last Password Change
- Last Invalid Password Date/Time
- Number of Invalid Login Attempts
- Whether the User is Locked Out

## About O'Neil Software

**Scan. Store. Manage. Deliver.**<sup>™</sup> Committed to leading the industry for over 25 years, O'Neil has been the software and hardware **solutioneers**<sup>™</sup> for over 850 record centers in more than 67 countries, ranging from start-ups to multi-nationals.

O'Neil's solutions manage/track multiple types of data including traditional storage boxes, file folders, documents and tapes; from deposit to destruction, work order to invoice. We're also known as industry pioneers for barcode tracking, portable printers, wireless handhelds and web technology. O'Neil's products consistently offer enhancements and new features that improve ease of use, not found anywhere else. Our flagship product RS-SQL, is the most competitively-priced software solution on the market, ensuring record center productivity and profitability. O'Neil's RSMobile software was the recipient of the 2005 Motorola<sup>®</sup> Enterprise Mobility Solutions Award for the North American Region and is AT&T<sup>®</sup> Certified — now connected from anywhere. Additionally our company is a Microsoft<sup>®</sup> Gold Partner.

Regional coverage includes the Americas, Europe, India/Middle East and Australia.

You can learn more about O'Neil Software by visiting our website at [www.oneilsoft.com](http://www.oneilsoft.com).



O'Neil Software, Inc.  
11 Cushing, Irvine, CA 92618  
TEL (949) 458-1234 • FAX (949) 206-6949  
sales@oneilsoft.com • www.oneilsoft.com

Offices in California, Florida, United Kingdom, Australia & India.  
©2008 O'Neil Software, Inc. All Rights Reserved.



ISV/Software Solutions

