

RS-SQL 3.05 — Focused on RS-SQL, RSMobile® & RSWeb®.NET Enhancements

NOTE: This data sheet is not intended to replace the RS-SQL 3.05 Official Release Notes, but rather to identify some of the more significant changes to the software. It is critical that you thoroughly read the RS-SQL 3.05 Release Notes before proceeding with your upgrade.

Preliminary Steps Before Upgrading

If you are working with previous versions of our software (3.02 or earlier), make certain that you refer to the Preliminary Steps Before Upgrading in the RS-SQL Version 3.05 Release Notes and Highlights. During this upgrade, significant RS-SQL database modifications were performed, with most tables effected. Many indexes, defaults, procedures and constraints were destroyed and recreated after altering the USER_ID data type. Please refer to the RS-SQL 3.05 Release Notes and Highlights, so you can perform the proper steps before proceeding with your upgrade.

DO NOT INSTALL if you are currently using custom software developed by O'Neil. Contact Technical Support for assistance. The software shipped on the RS-SQL CD for this new release contains **ONLY STANDARD** RS-SQL software.

Should you have any doubts or concerns about the information provided or your readiness to complete this upgrade, Technical Support is always available to answer any questions you may have, and guide you in performing any of these preliminary steps.

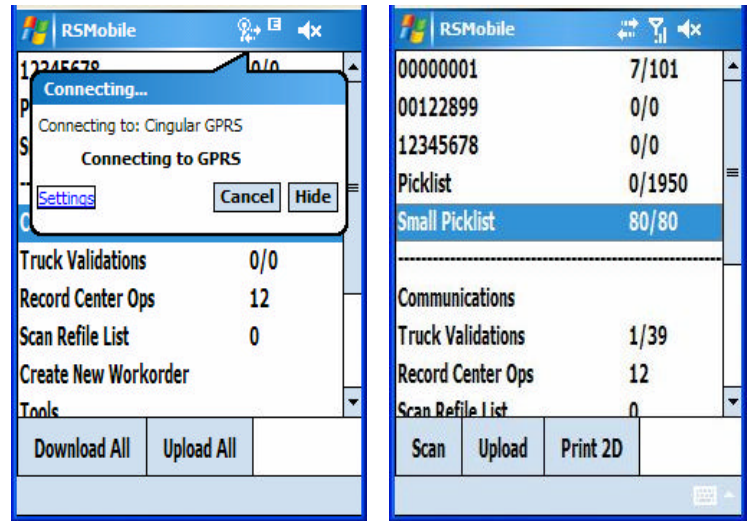
RS-SQL Interface Highlights

Now Fully Windows Vista Compatible!

Vista is the most recent and impressive release of the Windows operating system produced by Microsoft® offering numerous enhancements. In keeping with our commitment to you, where technology is headed and our Gold-Certified partnership with Microsoft, this enhancement was made to benefit our valued customers.

Workorder Closing Additions Offer More Billing Options, Greater Security and Control

Previously you had only two choices, as to when you could generate an invoice. You could bill according to the Workorder Create Date, or the date the service was performed, using the Required by Date. Now a third option has been added, so you can bill when you have closed a workorder.



This feature is further enhanced by not allowing changes/edits to the Workorder Close Date, once it has been selected.

We understand, however, that changes are sometimes necessary, so a Workorder Lock Override can be set for a privileged user, enabling the individual to reopen and save a closed workorder.

Enhanced Priority Services Ensure Timely Deliveries

When a new calculation feature is selected, the Required by Date/Time is determined based on business days only, now skipping any holidays. If the Required by Date/Time falls on business-closed hours after the calculation, it will be adjusted to the next open business day.

Ability to Post Information to Workorder Notes Provides a Complete Audit Trail

When an item is scanned as "In Research," a notation is included in the Workorder Notes advising customers that an item requested is now on the "Suspense List" and currently unavailable. This provides complete visibility of item requests requiring further investigation.

Other Services Posting Allows Greater Communication

When an item is scanned as "Not Found" or a filefolder "In Research," we know you want to keep your customer apprised of the status. To assist you in this, additional information can now be automatically saved directly on the workorder that you give to your customer, allowing complete transparency in your processes.

New Options Available When Posting Web Orders Ensuring Customer Control

Oftentimes, the Web order and workorder addresses do not match. You now have the flexibility as to how you handle this type of discrepancy. You can add the items to the workorder address rather than the Web address; add the items to the workorder and replace the workorder address with the Web address; or simply choose not to post the items to the workorder at all and contact the customer for clarification.

More Choices in Reporting Services Reports

If you haven't already done so, this release is a good time to install the new Microsoft Reporting Services tool, provided **FREE** with SQL Server. With all your favorite reports available, now is the time to usher in a new year with this great tool.

RSMobile Interface Highlights

RSMobile Software is AT&T® Certified Providing Optimal Performance

Using the Motorola MC9094 handheld, you can now communicate from anywhere, not just via a "Wi-Fi" hot spot. This means delivery information can be uploaded immediately to the record center; pick lists can be sent to remote facilities; and lookups can take place using the new "Live and Connected" features.

RSMobile software runs over the AT&T network and enables instant communications with drivers or record center staff working in remote facilities.

New Look Menu Changes Provide You With Instant Status Determination

Right from the main menu and simply by way of a glance, item counts let you know if an assignment is complete, partially complete, or not even started yet.

Also, several "Live and Connected" features make use of a wireless connection, to gather and display information from the RS-SQL database. This allows you to Sort Items by Workorder, as well as perform Item Lookup and Location Audit on scanned items — all in real time.

Workorder Contact/Address Detail Saves Drivers Time

RSMobile now allows you to view a list of contacts and addresses for each workorder, without the need to click on each individual one. A scrolling list of each account is displayed and may be printed, so it can be used as a quick reference.

Remote Initialization — Makes Software Updates Easier

When updating your RSMobile device with the latest software, previously this could be difficult when working in a remote facility. Now you no longer have to return the device to the record center, to upgrade your handheld.

RSWeb Interface Highlights

Enhanced User Administration Enables Greater Control and Security

Customers of your record center can now manage their Web users themselves through RSWeb.NET. Activities include adding/modifying or deactivating users; deleting users with no activity; changing function or account access; modifying available reports. This lightens your workload while providing your customers with greater autonomy.

A Multiplicity of Languages to Choose From

Right from the RSWeb.NET Login Screen, your customer now has their choice as to the language they prefer to work in. Remember, in RS-SQL and RSWeb.NET, language can simply be terminology changes such as "legalese" for lawyers, or real languages such as Spanish or French.

Document Support Allows for Greater Control

Your customers can now add, edit and delete documents via RSWeb.NET. Once submitted, it is changed in real-time in the RS-SQL database at the record center.

About O'Neil Software

Scan. Store. Manage. Deliver.™ Committed to leading the industry for over 25 years, O'Neil has been the software and hardware **solutioneers™** for over 850 record centers in more than 65 countries, ranging from start-ups to multi-nationals.

O'Neil's solutions manage/track multiple types of data including traditional storage boxes, file folders, documents and tapes; from deposit to destruction, work order to invoice. We're also known as industry pioneers for barcode tracking, portable printers, wireless handhelds and web technology. O'Neil's products consistently offer enhancements and new features that improve ease of use, not found anywhere else. Our flagship product RS-SQL, is the most competitively-priced software solution on the market, ensuring record center productivity and profitability.

RSMobile software was the recipient of the 2005 Motorola® Enterprise Mobility Solutions Award for the North American Region and is AT&T® Certified — now connected from anywhere. Additionally our company is a Microsoft® Gold Certified Partner. Regional coverage includes the Americas, Europe, India/Middle East and Australia. You can learn more about O'Neil Software by visiting our website at www.oneilsoft.com.



O'Neil Software, Inc.
11 Cushing, Irvine, CA 92618
TEL (949) 458-1234 • FAX (949) 206-6949
sales@oneilsoft.com • www.oneilsoft.com

Offices in California, Florida, United Kingdom, Australia & India.
© 2008 O'Neil Software, Inc. All Rights Reserved.