

RS-SQL 3.4 — Focused on RS-SQL & RSWeb®.NET Enhancements

NOTE: This data sheet is not intended to replace the RS-SQL 3.4 Official Release Notes, but rather to identify some of the more significant changes to the software. It is critical that you thoroughly read the RS-SQL 3.4 Release Notes before proceeding with your upgrade.

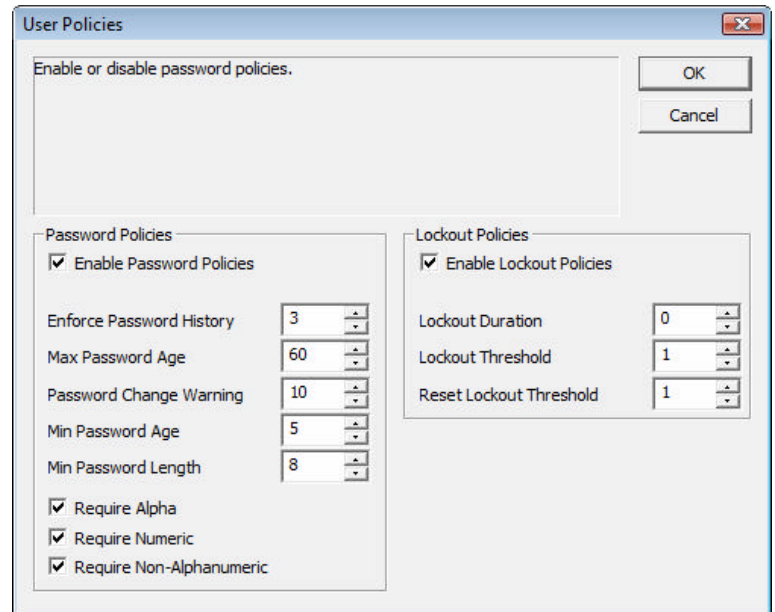
Preliminary Steps Before Upgrading

To ensure a smooth and successful transition to Version 3.4, the following are just some of the significant steps that need to be noted and accomplished:

NEW: During this upgrade, significant RS-SQL database modifications will be performed, with most tables effected. Many indexes, defaults, procedures and constraints will be destroyed and recreated after altering the USER_ID data type. Please refer to the RS-SQL 3.4 Release Notes before proceeding with your upgrade.

- Upgrade any Windows NT Operating Systems running RSWeb® to Windows 2000 or Windows XP.
- Install Adobe Acrobat Reader Version 5.0 or Above
- Upgrade all RSMobile® Hand-Helds to the Windows Mobile 2003 Operating System or Higher.
- If upgrading from a version lower than 2.8, it is critical that you refer to Version 3.2 Release Notes for important information regarding changes to the RSWIN.INI and RSWEB.INI configuration settings.
- If upgrading from Version 2.01 or 2.02, check release notes for important information relating to RSMobile Comm Sessions, Document Activity and Item Alias Queries.
- Backup your database before and after upgrading.
- Install Macromedia Flash Player on all RSWeb Client PCs.
- Install the latest SQL Server Service Pack, as outlined in the RS-SQL Installation CD.
- **DO NOT INSTALL** if you are currently using custom software developed by O'Neil. Contact Technical Support for assistance. The software shipped on the RS-SQL CD for this new release contains **ONLY STANDARD** RS-SQL software.

Should you have any doubts or concerns about the information provided or your readiness to complete this upgrade, Technical Support is always available to answer any questions you may have, and guide you in performing any of these preliminary steps.



RS-SQL Interface Highlights

New Password and Lockout Policies Added for Greater Security.

Any company that provides goods and/or services is subject to potential liability, if the business causes damages to a client resulting from negligence or intentional misconduct on the part of an employee. To mitigate this liability, protect and secure assets as well as compliment RSWeb.NET, now there are several options available allowing you to enforce how frequently old passwords can be reused; the amount of characters required; the length of time it can be used until it must be changed; how frequently a user can change it; and the ability to monitor failed login attempts including the date, time and IP address (for RSWeb.NET).

Additionally, Lockout Policies allow you to set up specific procedures that apply, when a user is locked out of the system due to a password issue. For example, lockout duration, which sets the length of time the account is locked when someone violates the lockout controls. Additionally, lockout threshold, which sets the number of invalid logon attempts allowed before an account is locked out.

Enhanced Records Retention Scheduling

Records retention and disposition programs are a central part of any well-rounded records management program. They provide economic, operational and legal/regulatory benefits to an organization.

For these reasons, Records Retention has been significantly enhanced with configurable Destroy Date calculations, using single or multiple dates. Select from four different dates: To Date, From Date, User Defined and Add Date. Additionally you can specify the order in which the dates are used, should one or more of the item's date fields be empty.

You also have the ability to mark a retention schedule as inactive. If retention information is set to inactive, the Record Series code associated with it cannot be assigned to any items that are controlled by that retention information.

A flag has also been added to the Account Add/Edit dialog, to indicate if a sub account should inherit retention schedule information from a parent account, should none exist for that sub account. This feature dramatically reduces set-up time.

Priority Alert Feature Updated Based on Your Input.

Because your feedback is extremely important to us, O'Neil has added a new submenu, to allow viewing and editing of all existing RSWeb.NET alerts; the ability for you to create alerts for almost anything and to use this feature as an internal messaging system; and display previous alerts received and archive or delete selected alerts.

RSWeb.NET Interface Highlights

Drop Down Lists Have Been Introduced for Greater Accuracy.

While adding/editing fields to custom data entry forms, you can now set up a drop down list for the Account and Category fields. This means that your web users can select an entry from a drop down list, rather than having to type the entry themselves, thus preventing wrong information from being keyed in. You also have the ability to configure the maximum number of drop down rows.

In the Inventory grid when your web users double click on a row, the default Edit form is brought up for immediate editing, saving them time and a mouse click or two. A faster way of sorting has also been introduced. The Inventory, Shopping Cart and Order Status grids can now be sorted simply by clicking on the column heading.

When Adding or Editing An Item, the Destroy Date and Perm Flag Will Be Updated.

This enhancement has been provided to ensure that all items submitted through the web will have the correct Destroy Date, based on their retention schedule.

A New, More User Friendly Calendar Tool Has Been Added for Ease of Use.

This feature has been added in all date fields, allowing you to pick the date from a calendar drop down menu, as opposed to having to pick from a month, day and year field.

About O'Neil Software

Scan. Store. Manage. Deliver.[™] Committed to leading the industry for over 25 years, O'Neil has been the software and hardware **solutioneers**[™] for over 850 record centers in more than 60 countries, ranging from start-ups to multi-nationals.

O'Neil's solutions manage/track multiple types of data including traditional storage boxes, file folders, documents and tapes; from deposit to destruction, work order to invoice. We're also known as industry pioneers for barcode tracking, portable printers, laser scanners, wireless handhelds and web technology. O'Neil's products consistently offer enhancements and new features that improve ease of use, not found anywhere else. Our flagship product RS-SQL, is the most competitively-priced software solution on the market, ensuring record center productivity and profitability. RSMobile software was the recipient of the 2005 Symbol Enterprise Mobility Solutions Award for the North American Region. O'Neil Software is also a Microsoft[®] Gold Certified Partner.

Regional coverage includes the Americas, Europe, India/Middle East and Australia.

You can learn more about O'Neil Software by visiting our website at www.oneilsoft.com



O'Neil Software, Inc.
11 Cushing, Irvine, CA 92618
TEL (949) 458-1234 • FAX (949) 206-6949
sales@oneilsoft.com • www.oneilsoft.com

Offices in California, Florida, United Kingdom, Australia & India.
© 2007 O'Neil Software, Inc. All Rights Reserved.