

RS-SQL 3.2 — Focused on RSWeb.NET & RSMobile Enhancements

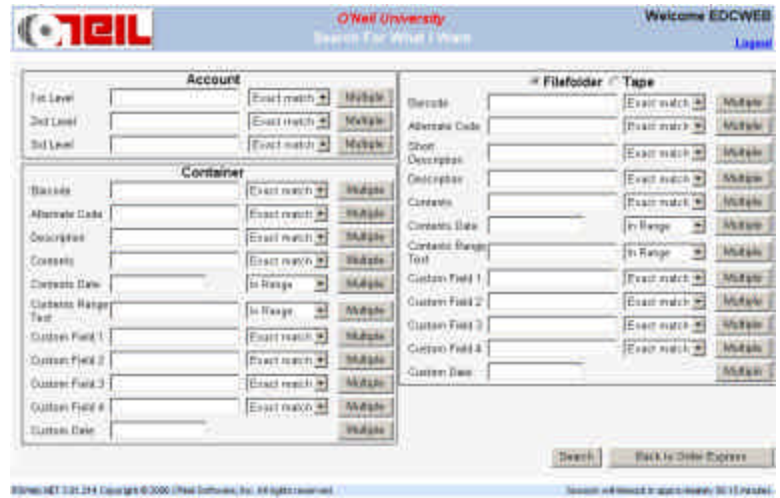
NOTE: This data sheet is not intended to replace the RS-SQL 3.2 Official Release Notes, but rather to identify some of the more significant changes to the software. It is critical that you thoroughly read the RS-SQL 3.2 Release Notes before proceeding with your upgrade.

Preliminary Steps Before Upgrading

To ensure a smooth and successful transition to Version 3.2, the following are just some of the significant steps that will need to be accomplished:

- Upgrade any Windows NT Operating Systems running RSWeb® to Windows 2000 or Windows XP.
- Install Adobe Acrobat Reader Version 5.0 or Above
- Upgrade all RSMobile® Hand-Helds to the Windows Mobile 2003 Operating System or Higher.
- With this new release, RSWIN.INI configuration settings will now be read from the RS-SQL database, to prevent you from accidentally deleting any files and enhancing security. To ensure that the settings were saved properly to the database, use the RS-SQL Administration program.
- RSWEB.INI configuration settings will now also be read from the database. However, if you are upgrading from a version lower than 2.08, the upgrade program **WILL NOT** transfer the settings in the RSWEB.INI file to the database. As a result, after upgrading you will need to reconfigure the settings using the RS-SQL Administration program.
- Backup your database before and after upgrading.
- Install Macromedia Flash Player on all RSWeb Client PCs.
- Install the latest SQL Server Service Pack, as outlined in the RS-SQL Installation CD.
- If upgrading from Version 2.01 or 2.02, check release notes for important information relating to RSMobile Comm Sessions, Document Activity and Item Alias Queries.
- Contact Technical Support if you are currently using custom software developed by O'Neil. The software shipped on the RS-SQL CD for this new release contains **ONLY STANDARD** RS-SQL software. **DO NOT** install if you are currently using custom software.

Technical Support is always available to answer any questions you may have, or assist you in performing any of these preliminary steps.



RSWeb®.NET Interface Highlights

Express Ordering Added.

The Order Express menu option provides different ways for your customers to order an item. It can be used to quickly order an item if you do not know its barcode, it can be used to search for items, and it can be used to request un-registered items. **All can be quickly placed onto workorders with the minimum amount of steps.**

Web Priorities with Alerts Seamlessly Passed to Work Orders.

A new priority alert feature allows you to set up notifications when priority workorders or web orders are placed in RSWeb.NET. Notification alert preferences are set in Administration, and a new program monitors incoming orders and sends out the notification to selected users. RSWeb.NET also allows the Priority and Requested Fulfillment date on web orders is now copied to the required by date/time on the workorder.

Unregistered Filefolders Seamlessly Handled.

RSWeb.NET allows your clients to order filefolders out of boxes that have never been indexed by you. RSWeb.NET now works in tandem with RSMobile and the new substitution/add-related feature to ensure your database maintains its integrity throughout the process.

Custom Themes for Your Brand.

RSWeb.NET now allows you to have your record center's branded looks. You can make changes to the RSWeb.NET logo, set the style for the page header and footer, and change the side navigation bar background. RSWeb.NET provides a cascading style sheet template for your use. You can simply customize the style in one file after RSWeb.NET is installed.

Export any Search Results.

All search results in RSWeb.NET now have an Export feature. This allows your client to export data to a .txt file that can be viewed in Microsoft Excel or other programs

RSWeb.NET has many exciting new features, please see the separate RSWeb.NET Overview Data Sheet (DS002301/06) for further Information.

RSMobile® Interface Highlights

Pick it Anyway You Want.

In previous versions of RSMobile you could only scan the next item in the pick list, which meant you could not pick out of sequence. A new option, named Enforce Pick Order, can be unselected to allow any item on the pick list to be scanned.

Substitute Pick Items.

The Substitute feature allows for easy substitution of one Picklist item for another. You may be searching for an unregistered filefolder. When you locate the filefolder, you discover it already has a barcode. You can then use the Substitute feature to substitute the barcoded filefolder for the unregistered one on the picklist.

Add Related Pick Items.

The Add Related feature allows additional "related" items to be added to a Picklist from within RSMobile. You may be searching for an unregistered "Robert Smith" filefolder. When you locate the filefolder, you discover that there are actually three Robert Smith filefolders. You can then use the Add Related feature to add them to the picklist.

RSMobile Key Map.

Having trouble remembering all the possible options on your RSMobile device? Don't worry as anew feature has been added to the Keymap screen (accessed from the Help menu or by pressing Func + 1). While the screen is displayed, you can tap on any item listed and that keystroke is sent to the parent screen, and the Keymap screen closes. For example, if you are scanning a picklist and want to scan a Not Found, you can bring up the Keymap using Func + 1, then tap anywhere on the line showing "Item Not Found Func+5". A Func + 5 keystroke is actually sent to the Picklist screen, effectively resulting in a Not Found scan.

RSMobile Prefix Command Barcode.

A new Prefix Command feature has been added to RSMobile. This gives you the ability to scan barcodes of any length, add a prefix and pad them out with zeros to a specified length.

RS-SQL® Interface Highlights

New Menu View.

As we continue to give RS-SQL a new look, we build on the new icons by giving you the option to remove the buttons at the bottom of the screen. You can access all the same functionality quicker using a right-mouse button click. You can also completely remove the toolbar for more screen space.

About O'Neil Software

Committed to leading the industry, the name O'Neil Software has become synonymous with **accuracy, flexibility, experience and delivering results** in record storage management. For 25 years, O'Neil has been the software and hardware **solutioneers™** for over 850 record centers in more than 60 countries, ranging from start-ups to multi-nationals.

O'Neil's solutions manage/track multiple types of data including traditional storage boxes, filefolders, documents and tapes; from deposit to destruction, work order to invoice. We're also known as industry pioneers for barcode tracking, portable printers, laser scanners and web technology. O'Neil's products consistently offer automation, enhancements and new features that improve ease of use not found anywhere else. Our flagship product RS-SQL, is the most competitively-priced software solution on the market, ensuring record center productivity and profitability. RSMobile software is the recipient of the 2005 Symbol Enterprise Mobility Solutions Award for the North American Region. O'Neil Software is also a Microsoft® Gold Certified Partner.

Regional coverage includes the Americas, Europe, India/Middle East and Australasia.

You can learn more about O'Neil Software by visiting our website at www.oneilsoft.com



O'Neil Software, Inc.

11 Cushing, Irvine, CA 92618

TEL (949) 458-1234 • FAX (949) 206-6949

sales@oneilsoft.com • www.oneilsoft.com

Offices in California, Florida, United Kingdom, Australia & India.

© 2006 O'Neil Software, Inc. All Rights Reserved.